

# C315 Château TOURNEFEUILLE 2023

## Lalande de Pomerol



C315 is the cadastral identification of Château Tournefeuille, central plot surrounding the château, representing its most beautiful terroirs. Merlot wine, no sulfur addition, aged in amphora.



**SOL & SITUATION** : Gravelly



**AGE OF VINES**: 10 to 30 years



**VINEYARD PRACTICES** : Traditional ploughing. Sustainable agriculture. Manual harvesting.



**VINIFICATION** : The grapes are sorted on tables. Vinification during 4 to 5 weeks in small concrete vats.



**AGEING** : Amphoras



**BLENDING** : 90% merlot 10% malbec

**PRODUCTION** : 6 000 BOTTLES



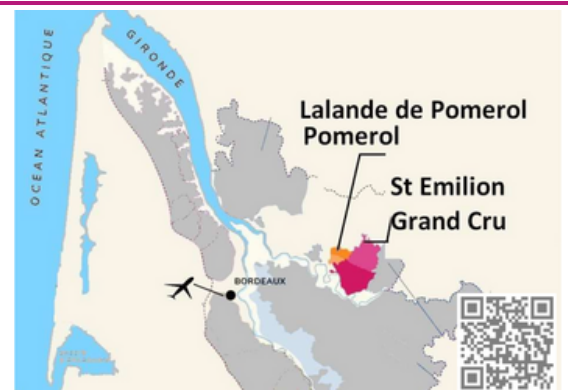
**PACKAGING** : Carton casEs of 6 bottles.



### Tasting :

This « West » cuvée illustrates a wine of balance, fruit and lightness, temperate and moderate.

14.5% Vol



Emeric Petit—Vigneron - 33500 Néac—France

Tél : 0033 6 08 33 70 02—0033 5 57 51 18 61

[epetit@chateau-tournefeuille.com](mailto:epetit@chateau-tournefeuille.com)—[info@chateau-tournefeuille.com](mailto:info@chateau-tournefeuille.com)

[www.chateau-tournefeuille.com](http://www.chateau-tournefeuille.com)—[@chateautournefeuille](https://www.instagram.com/chateautournefeuille)

